



PRODUCT CATALOGUE

BROMIC
HEATING



Trusted by top architects and designers, our patented Smart-Heat™ radiant heat technology brings warmth and elegance to iconic hospitality venues, stylish homes and premier entertainment spaces. Known for unmatched performance, lasting reliability and sleek, modern design, we transform outdoor areas into sophisticated sanctuaries. We don't just provide warmth – we craft unforgettable experiences.





STRIKING DESIGNS
LASTING RELIABILITY
UNMATCHED PERFORMANCE

You take pride in your work - so do we.
Every element of our products are meticulously designed, engineered and crafted to perfection. Blending premium materials, superior radiant heat technology and striking aesthetics, we complement thoughtfully curated spaces for years to come.

Transform outdoor living spaces into year-round havens, perfect for gathering, relaxing, and making lasting memories.



Redefine outdoor living, extending your indoor comfort to the great outdoors.

Home Is Where The *Heat* Is

Hospitality With a *Warm Welcome*

From luxury resorts to bustling rooftop bars, providing year-round outdoor comfort has become an essential patron preference.



Exceed guest expectations with an inviting, warm experience they won't want to leave.

United States

ECLIPSE PORTABLE



Modern Sunset

“The residents wanted convenience and luxury. They absolutely love the Bromic Eclipse—it’s one of their favorite features. Now, they can sit out late into the evening with friends and family and optimize the outdoor seating for long into the evening. They have been using it every night!”

– **Bradley Leavitt**
Founder of AFT Construction

Australia

PLATINUM ELECTRIC



Barangaroo House

“The Bromic Heaters were a really good solution because you can’t actually see them, yet they’re here and they’re really doing their job. It’s really lucky that the technology can be so developed that you can have something that doesn’t even look like it’s here.”

– **Emilie Delalande**
Interior Designer at Etic

Germany

ECLIPSE ELECTRIC



Poolside Retreat

“The Eclipse Collection by Bromic was a perfect fit for us because it not only serves its functional purpose but also exudes a modern and chic vibe, exactly what we were seeking! The heater also functions as a light source, providing warmth and creating a pleasant atmosphere in outdoor areas, especially when drying off after a swim [and] it perfectly enhances the ambiance of the garden.”

– **Regina Schaurer-Will**
Homeowner

India

TUNGSTEN ELECTRIC



Hyatt Dehadrun

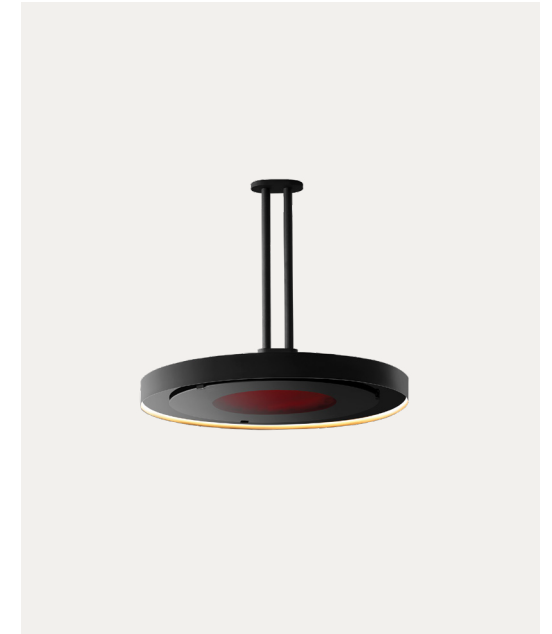
“The heaters played a vital role in creating inviting and comfortable outdoor spaces, enhancing the overall experience for guests. Their combination of stylish design, reliable performance, and user-friendly features make them an excellent choice for enhancing outdoor spaces, and we believe others would benefit from using them as well.”

– **Chaudhary**
Principal Architect of AND Studio,
New Delhi



ECLIPSE COLLECTION

Illuminating Elegance. *Redefining Radiance.*



The Eclipse Collection seamlessly blends sculptural elegance with functionality. Combining 2900W of radiant heat and dimmable LED ambient light, it features a sleek circular design and ceramic-glass face to bring a modern, luxurious touch to any space.



ECLIPSE SMART-HEAT™ ELECTRIC

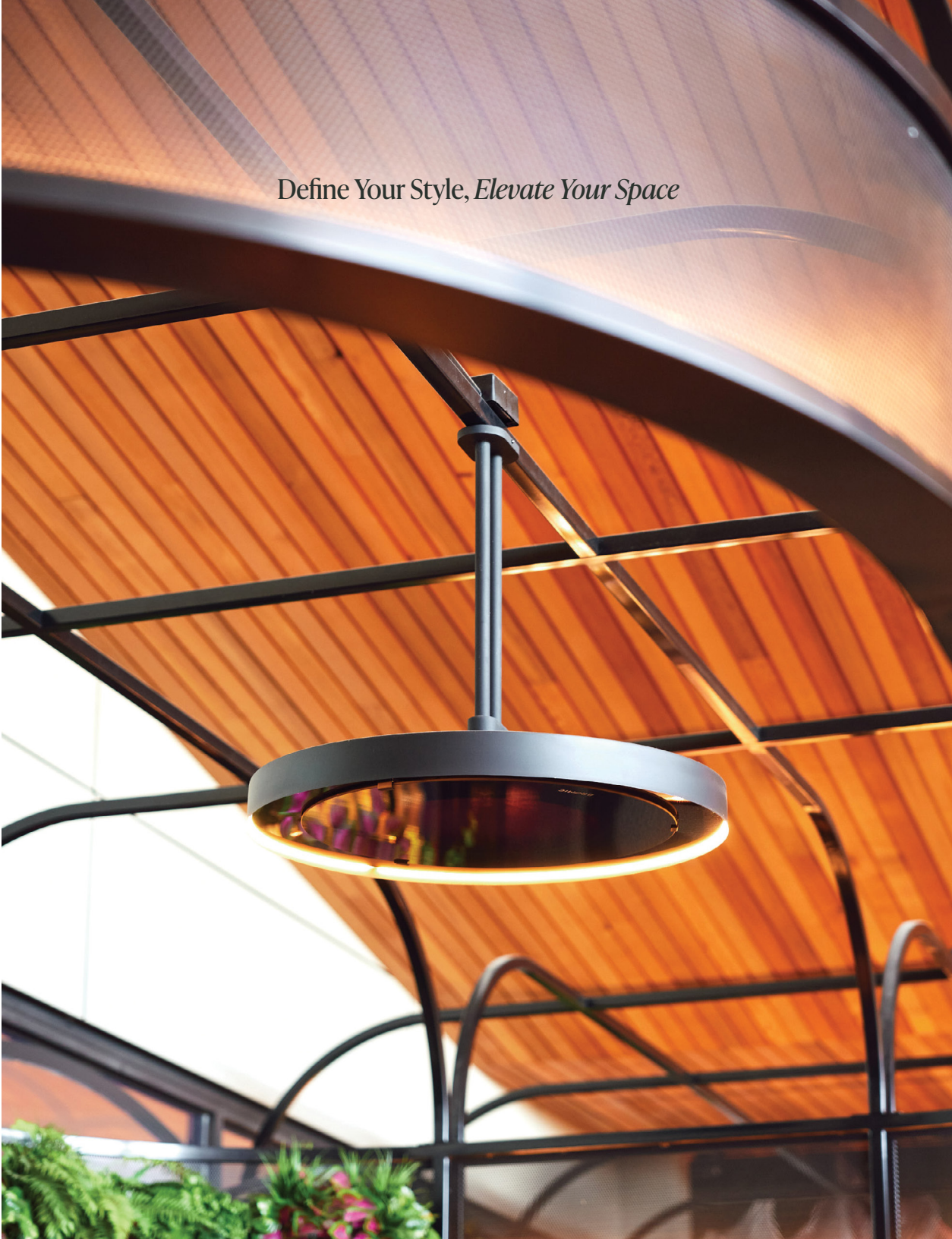
The Eclipse Electric offers exceptional performance with efficient radiant heating and a sleek, dimmable LED light ring. Designed for versatility, it features six mounting options, including wall, and ceiling mounts, ensuring a cohesive aesthetic within any outdoor space.

ECLIPSE
SMART-HEAT
ELECTRIC



1. 24~ Straight ceiling pole 2. 24~ Curved ceiling pole 3. 8~ Straight ceiling pole 4. Wall mount pole 5. 24~ Twin ceiling pole(included) 6. 48~ Straight ceiling pole

Define Your Style, *Elevate Your Space*





A Showpiece of Style and Comfort

ECLIPSE SMART-HEAT™ PORTABLE

With its striking, elegant design, the Eclipse Portable heater delivers both warmth and light as a freestanding centerpiece for design-focused outdoor spaces. Its graceful swan-neck structure and weighted base ensure style and stability, making it a conversation-worthy addition to any setting.

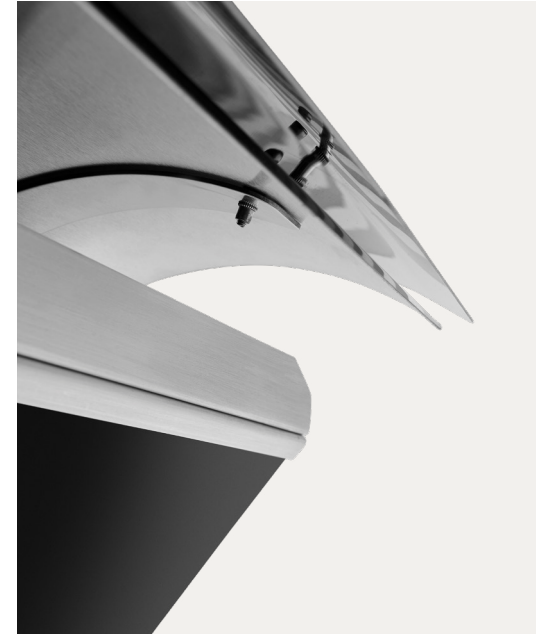
ECLIPSE
COLLECTION





PLATINUM COLLECTION

Slim-Line Sophistication Meets Superior Warmth



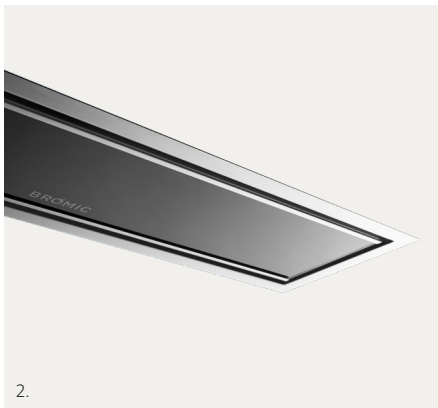
The Platinum Collection features Electric, Marine, and Gas models, crafted with premium stainless steel and a luxe ceramic-glass face. These sleek designs deliver elegance and exceptional performance in any space.



PLATINUM SMART-HEAT™ ELECTRIC

The Platinum Electric series offers sleek, modern heating solutions in 2300W, 3400W, or 4500W options. Available in sophisticated black or white finishes, these slimly designed heaters provide powerful, discreet warmth, making them the top choice for recessed comfort.

PLATINUM
SMART-HEAT
ELECTRIC



1. Ceiling Mount (included), optional 2' or 4' mounting pole **2.** Ceiling recess using the Standard or Low Clearance Recessing Kit **3.** Wall Mount (included)

Versatile Mounting for *Seamless Integration*



Stylish Heating for
Tough Environments

PLATINUM SMART-HEAT™ MARINE

Crafted from 316 marine-grade stainless steel, the Platinum Marine offers the same versatile range as the standard Electric series while providing superior corrosion resistance in coastal climates. Backed by a 5-year warranty, they deliver lasting performance with a sleek, durable design.





PLATINUM SMART-HEAT™ GAS

The Platinum Gas series offers powerful heating in 300 (23,600 BTU) and 500 (39,800 BTU) models. Featuring the same sleek ceramic glass face, these heaters deliver robust performance and a refined, modern aesthetic.

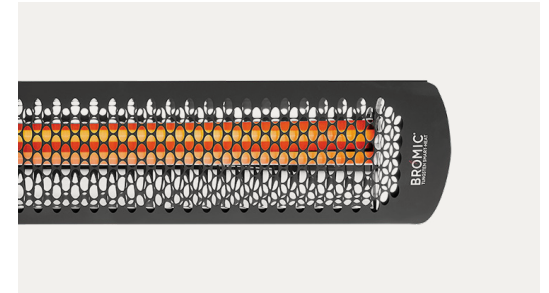
PLATINUM
COLLECTION





TUNGSTEN COLLECTION

Iconic Style, Industry-Leading *Performance*



The Tungsten Collection delivers high-performance heating with a timeless design. Available in Electric, Gas, and Portable models, it features durable 304-grade stainless steel and a signature honeycomb mesh face, combining durability with bold style for any outdoor space.



TUNGSTEN SMART-HEAT™ ELECTRIC

The Tungsten Electric offers a range of wattage options— 2000W, 3000W, 4000W, and 6000W— and tailored mounting solutions for every outdoor space. With efficient interior quartz elements and stylish black or white finishes, it combines versatility and performance, ensuring a perfect fit for your comfort needs.

TUNGSTEN
SMART-HEAT
ELECTRIC



1. Ceiling Mount (included), optional 3' mounting pole **2.** Wall mount (included)
3. Ceiling Recess

Flexible Mounting for *Every Outdoor Space*



Portable *Precision Heating*

TUNGSTEN PORTABLE

The Tungsten Portable delivers 38,500 BTUs of efficient warmth. Designed for convenience and maneuverability, this heater outperforms traditional portable heaters with its precise directional heat output, ensuring warmth is delivered exactly where it's needed. Featuring an award-winning design and a matte black finish, the Tungsten Portable adds style and performance to any outdoor setting.





TUNGSTEN SMART-HEAT™ GAS

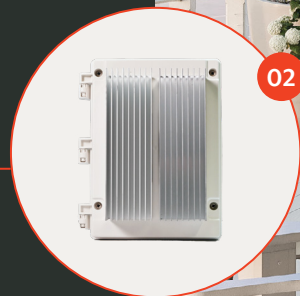
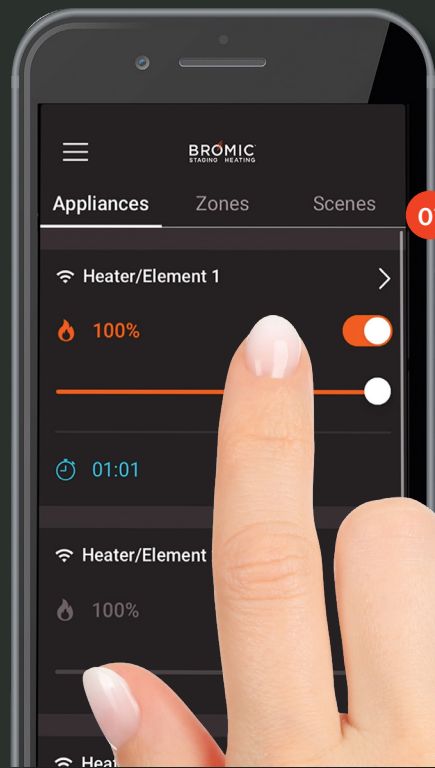
The Tungsten Gas series offers powerful outdoor heating in 300 (26,000 BTU) and 500 (43,000 BTU) models. Designed for large spaces, these heaters combine robust performance with an industrial aesthetic to enhance outdoor experiences.

TUNGSTEN
COLLECTION





AFFINITY SMART-HEAT™ CONTROLS COLLECTION



AFFINITY CONTROLS COLLECTION



Precision Heating, Personalized and Managed
Directly Through Your Device



Flexible Heat Control:

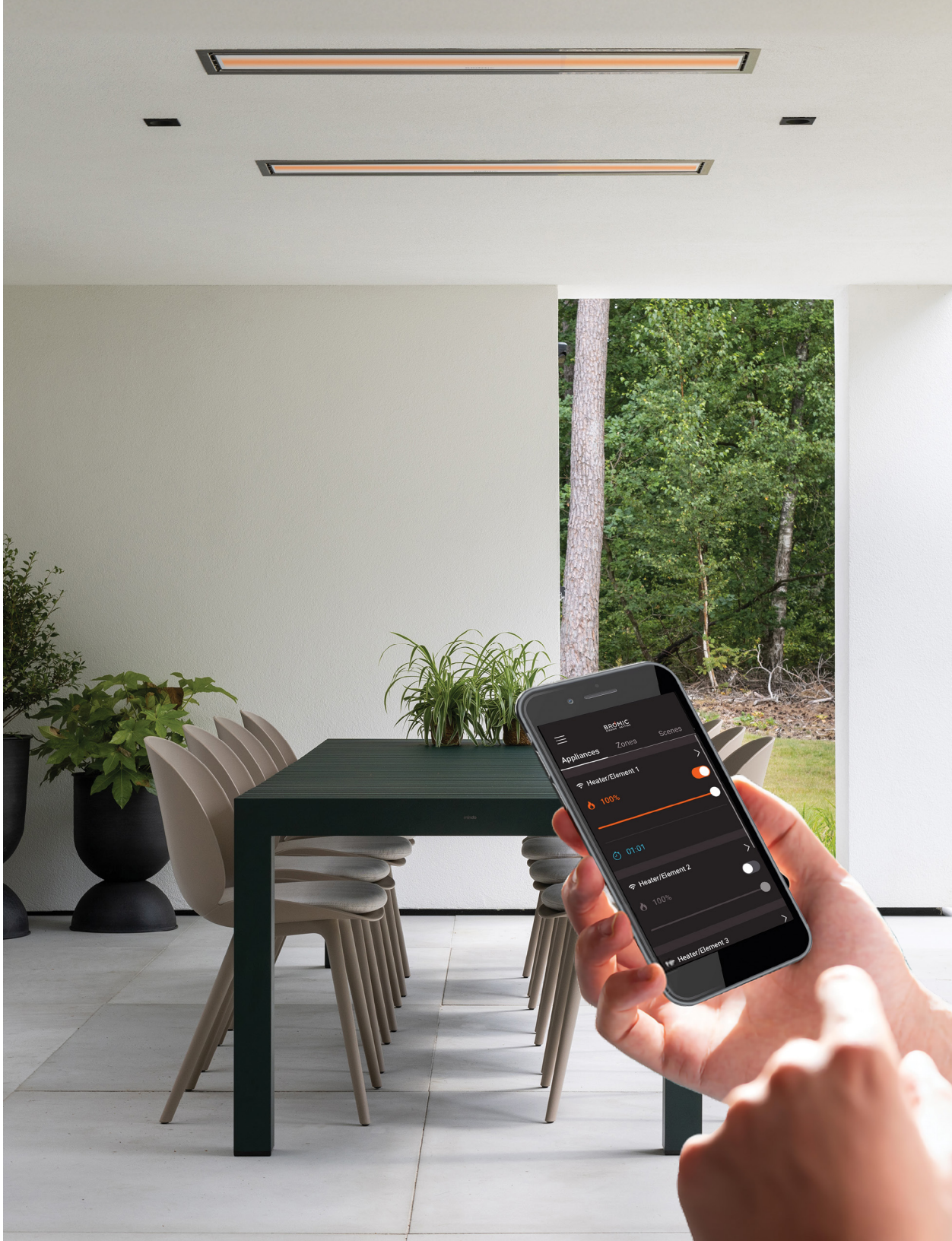
On/Off, dimming, and multi-heater zone management.

Advanced Features: Set timers, schedules, and manage multiple sites.

Voice & Automation Ready:

Compatible with Amazon Alexa, Google Home, and home/building automation systems.

Admin-Friendly: Multi-user management with customizable admin controls.



AFFINITY CONTROLS COLLECTION



On/Off Series



The On/Off Series offers 1, 2, and 5-channel models, enabling full on/off control for gas and electric heaters. Each channel supports up to 6000W or 10 gas heaters, ensuring efficient installation for any outdoor heating solution.

Dimmer Series



The Dimmer Series includes the same channel options and wattage allowance as the On/Off, with increased output functionality for our electric heater range. Enjoy custom comfort with precise adjustments down to 1% increments.

**Also available in Affinity Eclipse Controller option*

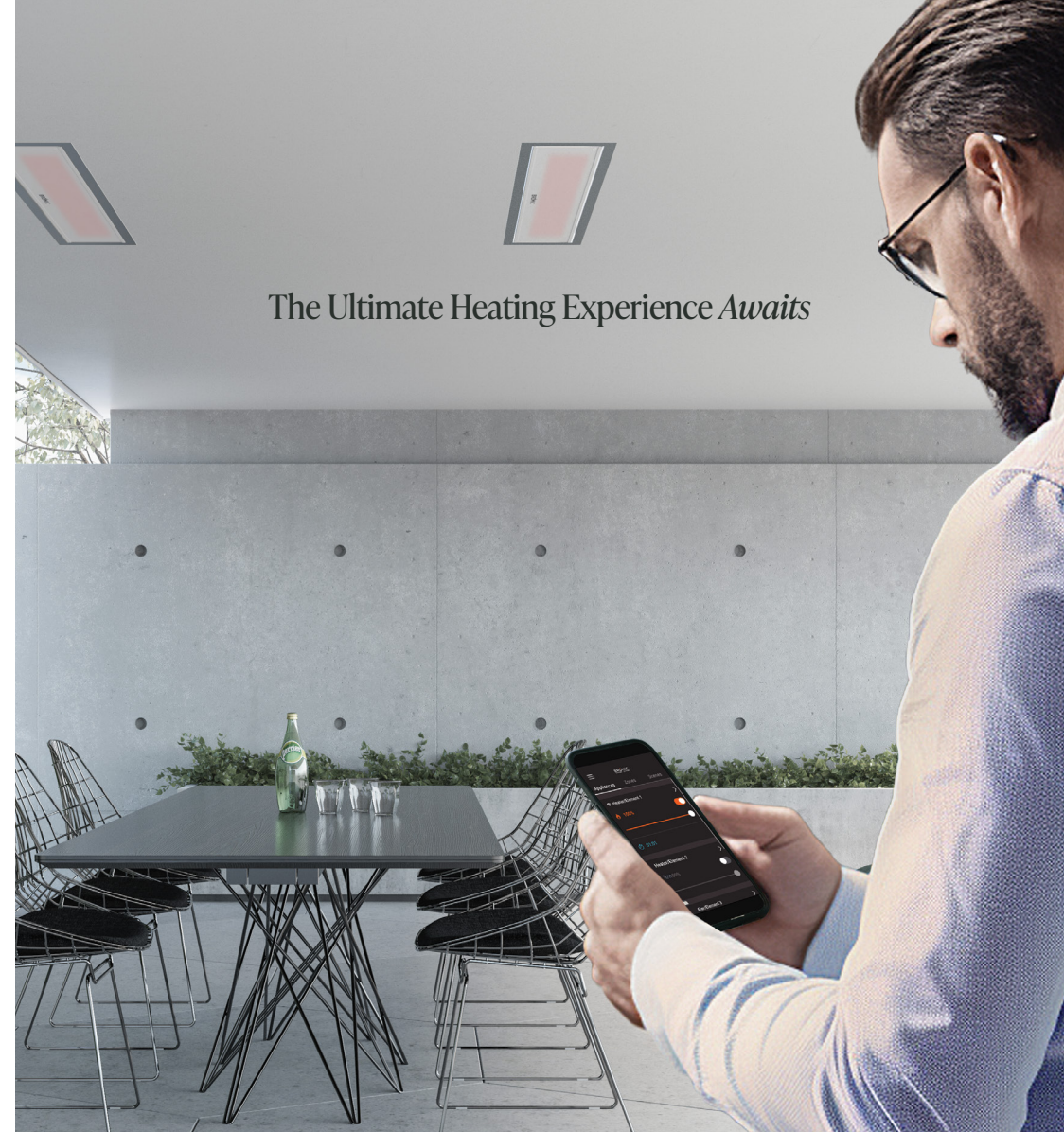
Effortless Control for *Ultimate Comfort*



AFFINITY CONTROLS COLLECTION



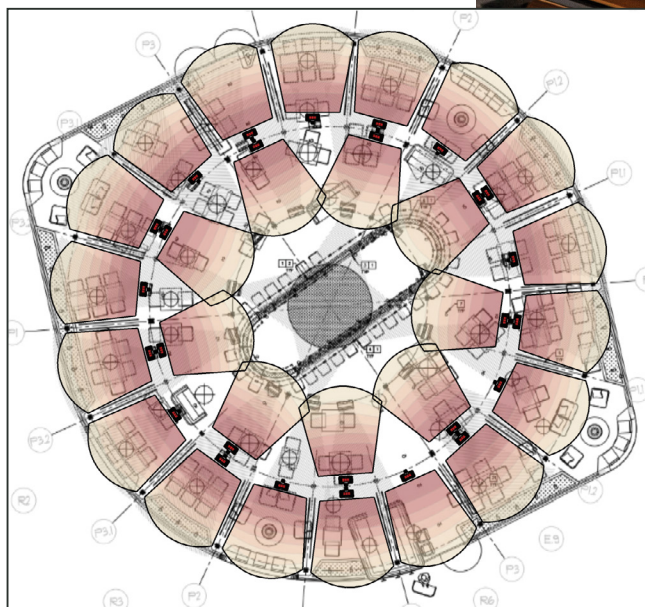
Transform commercial spaces, offering precise control to effortlessly manage zones and create a welcoming, guest-tailored environment.



The Ultimate Heating Experience *Awaits*

Elevate your home into an inviting sanctuary,
tailored to your comfort with intuitive control.

Tailored Heating Solutions,
Expertly Designed



COMPLIMENTARY DESIGN SERVICE

From heat coverage mapping to recommended product solutions that meet your needs, our Design Service takes away the guesswork of adding comfort to outdoor spaces.



HEATER COLLECTIONS

ECLIPSE COLLECTION

	MODEL	PRODUCT CODE	COLOR	FUEL TYPE	HEAT AREA	VOLTAGE	HEAT OUTPUT	AMPERAGE	PRODUCT LENGTH	PRODUCT WIDTH	PRODUCT HEIGHT	PRODUCT WEIGHT	LED COLOR	LED TEMPERATURE	LED LUMENS
Electric	2900W	BH0920001-1	Black	Electric	121 sq. ft	220-240V	2900W	12.1A	27.6"	2.5"	27.6"	30lbs	Warm White	3000K	216.6
Portable	2900W	BH0820001-1	Black	Electric	121 sq. ft	220-240V	2900W	12.1A	90"	24"	94"	383lbs	Warm White	3000K	216.6

PLATINUM COLLECTION

	MODEL	PRODUCT CODE	COLOR	FUEL TYPE	HEAT AREA	VOLTAGE	HEAT OUTPUT	AMPERAGE	PRODUCT LENGTH	PRODUCT WIDTH	PRODUCT HEIGHT	PRODUCT WEIGHT
Electric*	2300W	BH0320003 BH0320007	Black White	Electric	65 sq. ft	220-240V	2300W	9.6A	33"	2"	7"	16.5lbs
	3400W	BH0320005 BH0320008	Black White	Electric	108 sq. ft	220-240V	3400W	14.2A	50.2"	2"	7"	22lbs
	4500W	BH3622000 BH3622001	Black White	Electric	143 sq. ft	220-240V	4500W	18.8A	53.2"	2"	10.1"	33lbs
Marine*	2300W	BH0320015 BH0320017	Black White	Electric	65 sq. ft	220-240V	2300W	9.6A	33"	2"	7"	16.5lbs
	3400W	BH0320016 BH0320018	Black White	Electric	108 sq. ft	220-240V	3400W	14.2A	50.2"	2"	7"	22lbs
	4500W	BH3622002 BH3622003	Black White	Electric	143 sq. ft	220-240V	4500W	18.8A	53.2"	2"	10.1"	33lbs
Gas	300	BH0110002-1	Stainless Steel	LPG	160 ft sq.	110V	23,600 BTU	N/A	22.1"	15.9"	16.6"	33lbs
	500	BH0110004-1	Stainless Steel	LPG	215 ft sq.	110V	39,800 BTU	N/A	29.8"	15.9"	16.6"	44lbs
	300	BH0110001-1	Stainless Steel	NG	160 ft sq.	110V	23,600 BTU	N/A	22.1"	15.9"	16.6"	33lbs
	500	BH0110003-1	Stainless Steel	NG	215 ft sq.	110V	39,800 BTU	N/A	29.8"	15.9"	16.6"	44lbs

TUNGSTEN COLLECTION

	MODEL	PRODUCT CODE	COLOR	FUEL TYPE	HEAT AREA	VOLTAGE	HEAT OUTPUT	AMPERAGE	PRODUCT LENGTH	PRODUCT WIDTH	PRODUCT HEIGHT	PRODUCT WEIGHT
Electric*	2000W	BH0420030	Black	Electric	65 sq. ft	220-240V	2000W	8.3A	44"	3.5"	8.5"	19.8lbs
	3000W	BH0420031	Black	Electric	100 sq. ft	220-240V	3000W	12.5A	56"	3.5"	8.5"	22lbs
	4000W	BH0420032 BH0420012	Black White	Electric	130 sq. ft	220-240V	4000W	16.6A	44"	3.5"	8.5"	19.8lbs
	6000W	BH0420033 BH0420013	Black White	Electric	160 sq. ft	220-240V	6000W	25A	56"	3.5"	8.5"	22lbs
Gas	300	BH0210002-1	Stainless Steel	LPG	160 sq. ft	110V	26,000 BTU	N/A	19.3"	14"	15.9"	33lbs
	500	BH0210004-1	Stainless Steel	LPG	215 sq. ft	110V	43,000 BTU	N/A	25.4"	14"	15.9"	44lbs
	300	BH0210001-1	Stainless Steel	NG	160 sq. ft	110V	26,000 BTU	N/A	19.3"	14"	15.9"	33lbs
	500	BH0210003-1	Stainless Steel	NG	215 sq. ft	110V	43,000 BTU	N/A	25.4"	12"	15.9"	44lbs
Portable	500	BH0510001	Black	LPG	215 sq. ft	N/A	38500 BTU	N/A	19"	27"	7'1"	123.5lbs
	500	BH0510005	Black	NG	215 sq. ft	N/A	38500 BTU	N/A	19"	27"	7'1"	123.5lbs

*Platinum Electric also available in 208V and Tungsten Electric also available in 208V or 277V

CONTROLS

AFFINITY COLLECTION

	MODEL	PRODUCT NUMBER	VOLTAGE	MAX WATTAGE PER CHANNEL	PRODUCT LENGTH	PRODUCT WIDTH	PRODUCT HEIGHT	PRODUCT WEIGHT	IP RATING
On/Off*	1 Channel	BH3130051	110V-277V	6000W	11.4"	8.0"	4.4"	3.1 lbs.	IP54
	2 Channel	BH3130052	110V-277V	6000W	11.4"	8.0"	4.4"	3.6 lbs.	IP54
	5 Channel	BH3130053	110V-277V 3 Phase	6000W	19.7"	13.4"	8.0"	24.3 lbs.	IP54
Dimmer**	1 Channel	BH3130061	208V-277V	6000W	11.4"	8.0"	4.4"	3.5"	IP54
	2 Channel	BH3130062	208V-277V	6000W	11.4"	8.0"	4.4"	5.3"	IP54
	5 Channel	BH3130063	208V-277V 3 Phase	6000W	19.7"	13.4"	8.0"	27.6"	IP54
Eclipse	1 Channel	BH8380051	220V-240V	6000W	11.4"	8.0"	4.4"	5.3"	IP54
	5 Channel	BH8380055	220V-240V 3 Phase	6000W	19.7"	13.4"	8.0"	27.6"	IP54

*Compatible with fixed Platinum and Tungsten Collections
**Compatible with fixed Platinum and Tungsten Electric models

AFFINITY ACCESSORIES

MODEL	PRODUCT NUMBER
O-10V/Ethernet Expansion Board*	BH3130070

*Included in all 5 Channel Models

MANUAL WALL SWITCHES

	MODEL	PRODUCT NUMBER	MAX VOLTAGE	AMPERAGE	SWITCH COLOR	WALL PLATE COLOR
Indoor Manual Wall Switch	Single Switch	BH3130071	Up to 277V	20A	White	White
	Dual Switch	BH3130072	Up to 277V	20A	White	White
Outdoor Manual Wall Switch	Single Switch	BH3130081	Up to 277V	20A	White	Grey
	Dual Switch	BH3130082	Up to 277V	20A	White	Grey

ACCESSORIES

ELECTRIC MOUNTING OPTIONS

	MOUNT TYPE
Platinum Electric*	Mounting Bracket (Included)
	Low Clearance Recess Kit
	Standard Recess Kit
	2" Mounting Pole
Tungsten Electric	4" Mounting Pole
	Mounting Bracket (Included)
	Standard Recess Kit (Black White)
	3" Mounting Pole (Black White)
Eclipse Electric	8" Straight Pole
	24" Straight Pole
	24" Twin Pole (Included)
	24" Curved Pole
	48" Straight Pole
	Wall Mount Pole

*Also available in Marine Grade

GAS MOUNTING OPTIONS

	MOUNT TYPE
Platinum & Tungsten Gas	9.69" Mounting Bracket
	13.62" Mounting Bracket
	17.56" Mounting Bracket
	25.43" Mounting Bracket
	33.31" Mounting Bracket
	41.18" Mounting Bracket

